



ePlan Takeoff

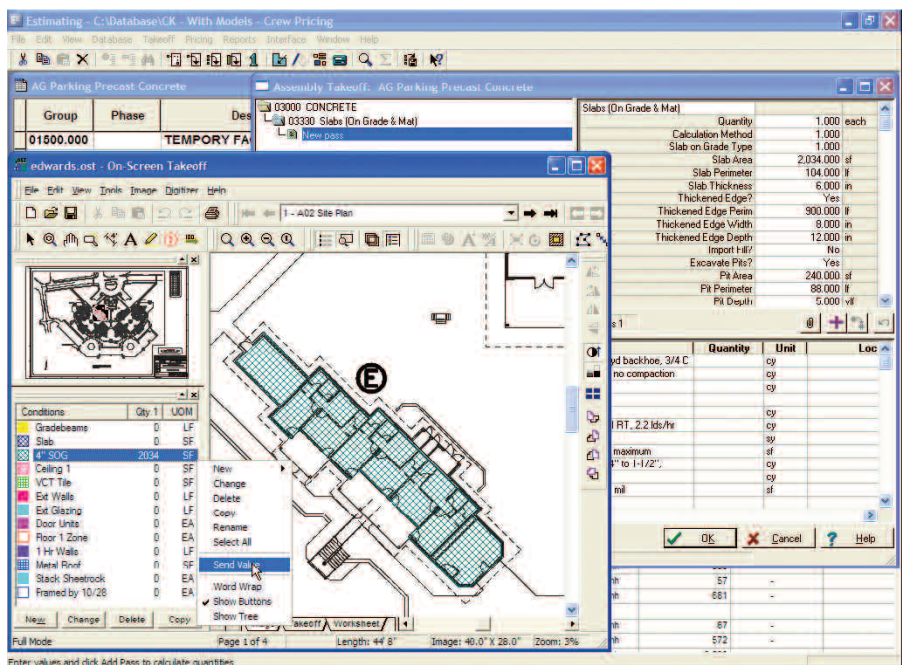
By connecting Estimating, a Sage Timberline Office application with On Center's On-Screen Takeoff product, ePlan Takeoff lets you generate counts and quantity takeoffs directly from electronic drawings for instant use in your estimates.

ePlan Takeoff gives you the ability to quickly calculate and transfer project dimensions including lengths, areas, and volumes directly to Estimating. It streamlines takeoff, provides a takeoff audit trail, and lets you create accurate estimates without ever needing to pore over bulky blueprints.

Features and efficiencies

- Receive takeoff values from your digital plans and send those values directly to an estimate.
- Associate estimates with digital plans stored in a variety of file formats. These include CAD formats such as DWG and DXF, plus JPEG, BMP, TIFF, and PDF, as well as the On-Screen Takeoff format, the Dodge plan format, and standard government file formats, including the Corps of Engineers.
- Support the use of paper plans in addition to the above electronic formats.
- Save plan quantities and images to the dimensions list window to use later.
- Recall the last perimeter you digitized from an estimating spreadsheet quantity cell or from the item or assembly takeoff window.
- Access your On-Screen Takeoff values and images while you review assemblies.

ePlan Takeoff is a part of Sage Timberline Office, fully integrated software created to streamline work and connect the people you depend on to build your business.



Send values from On-Screen Takeoff electronic plans directly to a Sage Timberline Office estimating spreadsheet.



©2005 Sage Software, Inc. All rights reserved. The Sage Software logo and the Sage Software product and service names mentioned herein are registered trademarks or trademarks of Sage Software, Inc., or its affiliated entities. All other trademarks are the property of their respective owners. 12/05