



## Model Manager

The Model Manager (PMM) product has been specially designed to enable builders to easily copy base plans and options from one representative model to a new model.

The Estimating Model and Option database for Sage Timberline Office represents the hub and the basis on which the Workflow Management Suite has been based. From the Model/Option database, a builder defines the plans, elevations, and options/upgrades for single- and multi-family dwellings. From buyer contracts and/or job starts the database generates budgets, purchase orders, and sales prices for these plans, elevations, and options. The creation and maintenance of this Model/Option Database is a significant part of the Workflow Management Suite user's workflow. One of the major tasks that confront Workflow Management Suite users is the need to create new models and/or options in their Estimating database for Sage Timberline Office. One of the most popular strategies for creating a new model, along with its attendant options, is to copy an already existing model

### Product features

The process of copying an existing model and options to a new model has been a fairly tedious task up until now. It involved the copying of Group Phases, Phases, Items, Group Assemblies, and Assemblies in the Estimating application. While it has been possible to utilize the Spreadsheet Editor tool to ease the burden of copying Items, it was still necessary to build the Option Assemblies

one at a time in the estimating program. The only other option was to have models/options added to a database by the database-building consultants at BuilderMT. PMM will perform the following tasks, quickly and easily:

- Locate and point to the correct Estimating database, depending upon which Purchasing "Area" the user is working on.
- Copy a model and any, or all, of its options to a new model.
- Copy selected options from an existing model to another existing model, where these options do not already exist.
- Delete a model and any, or all, of its options.
- Delete selected options from an existing model.

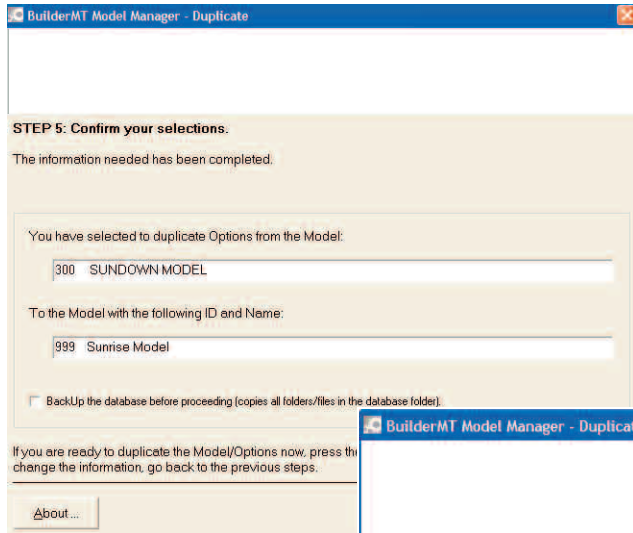
All of the above tasks are accomplished using an easy-to-understand user interface. We have used a "Wizard" approach to make the use of the tool even more intuitive.

The performance characteristics of the PMM are very good. Where it might take 2 - 8 hours to copy all of the options and Items from one model to another using the current tools, PMM will accomplish the same task in a few minutes. Similarly, copying one option from an existing

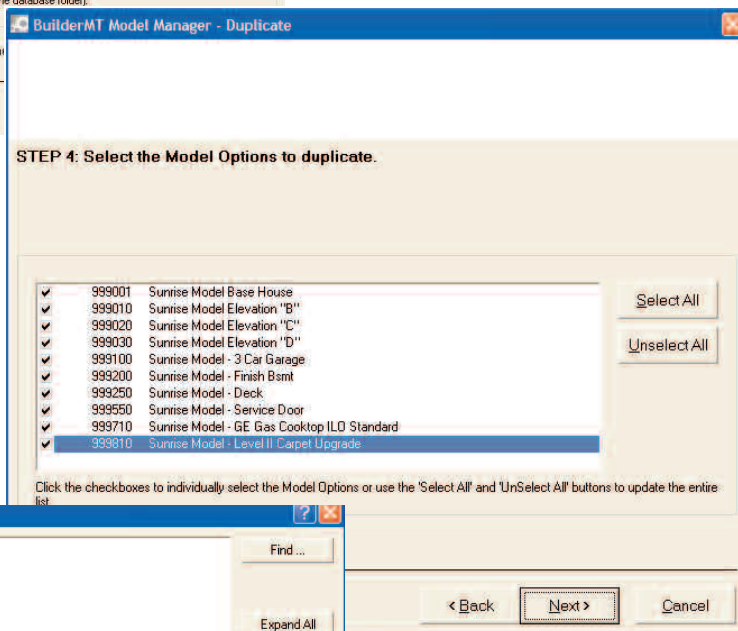
model to other existing models might take 30-60 minutes using conventional means; PMM will accomplish the same task in 1-5 minutes.

The Model Manager product is launched from the existing menu structure of the user's Workflow Management Suite, making use of this tool a seamless transition.

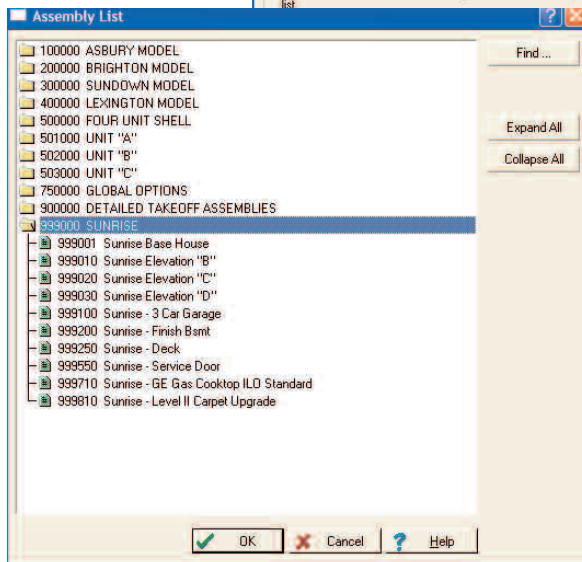
Model Manager, developed and supported by BuilderMT, is part of the BuilderMT Workflow Management Suite. It is also part of the Production Management suite of products for Sage Timberline Office, fully integrated financial and operations software for construction and real estate professionals.



Existing plans, elevations, and standard options can easily be selected and duplicated into a new plan for a new or existing community.



You can add new options from another plan into the new plan or simply duplicate the plan in its entirety.



Plans, elevations, and options are now available in Estimating to do take-offs or add and delete activities, change material items, quantities, etc. before putting this new plan on-line and generating costs and retail sales prices.

